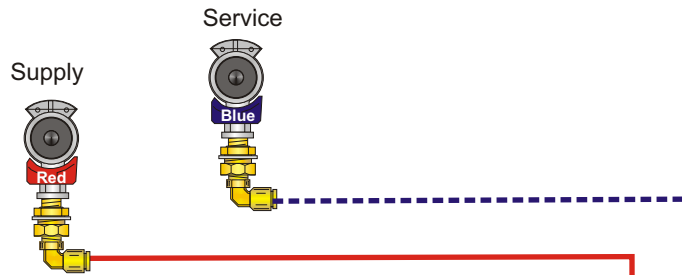


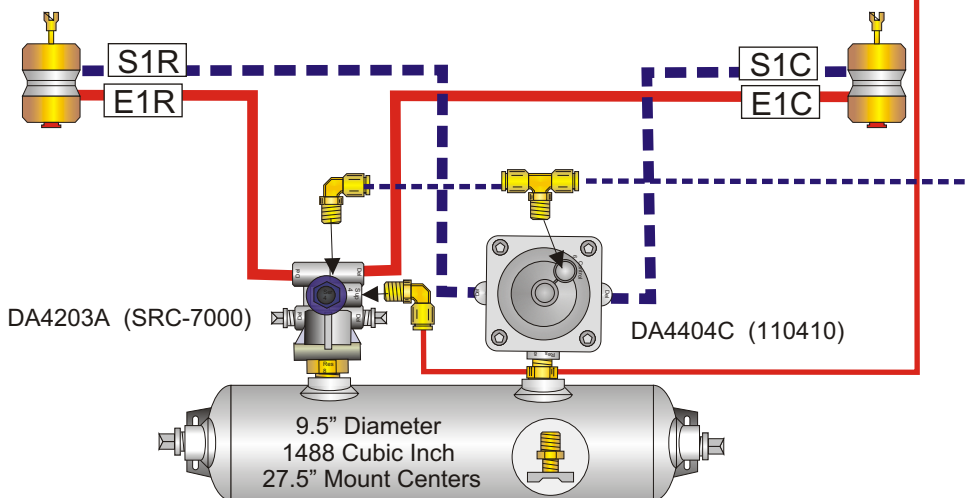
APPLICATION: 1 Axle Spring Brake FMVS 121 Exempt

PART #: **PAKESB-1-S1**

CONTENTS: Glad hand assemblies
 Air tank with installed drain valve and plugged unused ports
 Air tank mounting kit with pads, bolts, washers and lock nuts
 Brake valve(s) are installed and include push to connect fittings
 Hoses with swivel hose ends are installed to valve(s)
 Hose separators



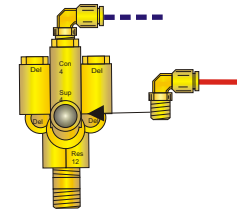
SPECIFY YOUR HOSE LENGTHS BELOW



OPTIONAL SYSTEMS

PAKESB-1-S2

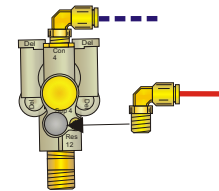
TRAMEC SPRING BRAKE VALVE



DA4204 (TEV) SB PRIORITY

PAKESB-1-S3

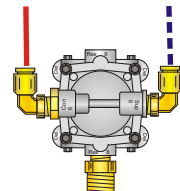
TRAMEC SPRING BRAKE VALVE



DA4204A (STEV) RES PRIORITY

PAKESB-1-S4

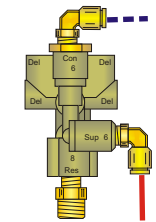
SEALCO SPRING BRAKE VALVE



DA4101 (110170) SB PRIORITY

PAKESB-1-S5

SEALCO SPRING BRAKE VALVE



DA4201 (110500) SB PRIORITY

SPECIFY HOSE LENGTH IN INCHES
 EMERGENCY:

E1R	E1C
E2R	E2C
E3R	E3C

SERVICE:

S1R	S1C
S2R	S2C
S3R	S3C
S4R	S4C

■ Service Hose ■ Supply Hose
 ■ Service Tube ■ Supply Tube

Specifications:

Hoses meet J1402 & JT106 specifications and are 3/8 ID unless otherwise noted. Reservoirs meet J10B specifications
 Pipe fittings are brass or plated SH80 steel. Push-in style 3/8 tube fittings standard. ABS Electronics pre-tested before shipment.